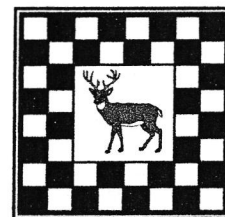


Hertfordshire Chess Association Newsletter

Newsletter no. 47 (2004-2005 Season)

January 2006



Association founded 1901

Affiliated to the British Chess Federation and to the Southern Counties Chess Union

President Tim Thurstan
Hon. Life Vice John R Denton, Bryan A Fewell, FB Roberts, J Sharp, HR Hurd
Presidents
Vice Presidents A Brewis, DR Brennan, AG Burrows, RR Claret, J Cook, EGD Crowden, W D'Costa, R Forst, J N Fraser-Mitchell, MS Harding, TK Hemingway, GT Howard, BD Judkins, RDJ Kearns, G Kenworthy, QA Latif, NHS Lavers, S Law, JA Leake, C Lean, E Leyns, PG Maguire, CE Majer, PA May, PW Newstead, DW Parrott, JD Rhodes, JJA Riley, JC Robertson, JT Simmons, OV Stobart, TM Thurstan, T Tomkins, CA Turner, MM Wali, DP Young
Affiliated Clubs and officers who served during the season are set out in issue 46

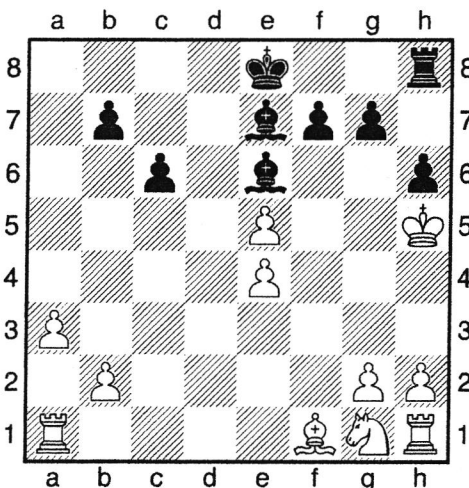
An Absolutely Perfect Game?

It is not often if at all that one plays a game that appears in print. The following game does just that and in *The Daily Telegraph* no less! It was played in the Hertfordshire League on 19th October 2004 in the match between WelwynHatfield Chess Forum 1 v Watford 2 on board two.

James Coleman (WHCF) – Mike Boyce (W)

1.d4 ♘f6 2.♙g5 The Trompovsky Attack
2...♗e4 3.♙f4 c5 4.f3 ♖a5+ 5.c3 ♗f6 6.♗d2
cxd4 7.♗b3 ♖b6 8.♖xd4 ♗c6 9.♖xb6 axb6
10.♗d4 e5 11.♗xc6 dxc6 Black sacrifices a
pawn for rapid development. White will take
longer to develop his pieces particularly as the
pawn on f3 hampers the knight 12.♙xe5 ♙e6
13.a3 b5 14.e4 b4 15.cxb4 ♙xb4+ 16.♙f2 In
Karttunen v A Volokitin 2002 white tried 16.
Ke2 and the game was in due course drawn.
Taking the bishop would of course lose the
exchange 16...♙c5+ The position after black's
16th move had been seen before. In Miles v
Hebden 2000 white played 17. Ke1 but black
eventually won. Amazingly Black had
considered this position in his pre-match
preparation! 17.♙g3? White's first and only
mistake! Perhaps white feared that black had
a perpetual check. From now on to the end all
the play is forced although Mike admitted that
he had not seen his 19th move at this
stage. 17...♗h5+ 18.♙h4 ♙e7+! 19.♙xh5 ♖a5!
20.f4 ♖xe5+ 21.fxe5 [if 21.f5 ♖xe4 and black
mates nonetheless: 22.♗f3 ♙xf5 23.♖e1 ♙g6
mate; 22.g3 ♙xf5 23.♖e1 ♙g6 mate; 22.g4
♙xf5 23.gxf5 ♖h4 mate] 21...h6! 0-1

See diagram in next column



A remarkable position! White without a piece developed cannot prevent g6 mate! As Malcolm Pein said in his newspaper column; "the game has some importance for the theory of the Trompovsky but is also destined to grace a collection of miniatures and the winner deserves high praise. If you are very lucky, then just once in your career there will come an opportunity to play an absolutely perfect game and Mike Boyce does just that with a beautiful combination to finish."

Financial Statements

General Income and Expenditure Account for the year ended 15th April 2005

2004	General Income	2005	2004	General Expenses	2005
£22.00	Adjudications	£37.00	£120.00	AGM/Committee hall hire	£125.00
£90.00	Club Affiliation Fees	£96.00	£32.00	BCF Year Books	£32.00
£53.69	Interest	£55.20	£0.00	Herts grading list	£0.00
£300.00	President/VP subs	£266.00	£287.80	Insurance	£293.80
£0.00	Tie sales	£6.00	£168.50	Newsletter/website	£145.51
£45.00	Unattached member subs.	£30.00	£50.00	SCCU fees	£50.00
			£0.00	Secretary's expenses	£0.00
			£12.00	Treasurer's expenses	£0.00
			£20.00	Adjudications	£15.00
			£60.00	Tie fund appropriation	£60.00
			£64.00	other	£33.50
£510.69		£490.20	£814.30		£754.81

Income and Expenses for Activities for the year ended 15th April 2005

	Income	Expenses	Surplus/ 2004/5	deficit 2003/4
Hitchin Congress	£4,422.13	£3,023.49	£1,398.64	£925.27
Correspondence Chess	£0.00	£100.00	-£100.00	£0.00
County matches	£165.70	£238.74	-£73.04	-£272.53
County matches; hall hire	£0.00	£100.00	-£100.00	-£96.00
Individual tournaments	£86.00	£203.35	-£117.35	-£16.40
Junior congresses	£441.14	£0.00	£441.14	£110.31
Junior Megafinal	£651.53	£317.50	£334.03	£270.00
League	£1,551.33	£1,400.00	£151.33	£269.12
Old Puller Cup	£20.00	£.00	£20.00	-£14.00
Team knock-outs	£146.00	£44.80	£101.20	£113.60
	£7,483.83	£5,427.88	£2,055.95	£1,289.37

NB. The accounts and budget were approved at the Association's AGM on 17th June 2005.

* * * * *

Meetings

In accordance with the Association's Rules Executive Committee meetings were held on 17th September and 10th December 2004 at the venue of the Stevenage Chess Club, namely Holy Trinity Parish Rooms, Holy Trinity Church, High Street, Stevenage, and on 1st April 2005 at the venue of St Albans Chess Club namely London Road Residents Association, Cell Barnes Lane, St Albans. The Annual General Meeting was held on 17th June 2005 also at the venue of the Stevenage Chess Club.

.....
 "With opposite coloured bishops the attacking side has in effect an extra piece in the shape of his bishop."
 M M Botvinnik

Balance Sheet as at 15th April 2005

	2005	2004
Association Funds		
Funds as at 16 th April 2004	£5,657.68	£4,504.09
Add: general income	£490.20	£510.69
Less: general expenditure	£754.81	£814.30
Net general income/(expenditure)	-£264.61	-£303.61
Net surplus on activities	£2,055.95	£1,289.37
Surplus for the year	£1,791.34	£985.76
Transfer Centenary Fund to General Fund	£0.00	£104.15
Transfer HSBC Fund to General Fund	£0.00	£63.68
Total Funds at 15 th April 2005	£7,449.02	£5,657.68
Consisting of:-		
Congress Fund	£4,614.97	£3,216.33
General Fund	£2,834.05	£2,441.35
Total Funds	£7,449.02	£5,657.68
Assets and Liabilities		
Assets		
Bank and cash balances	£8,769.02	£6,947.68
Add sums owed to the Association	£0.00	£0.00
Total assets	£8,769.02	£6,947.68
Liabilities		
County matches final stages	£100.00	£100.00
Tie replacement fund	£750.00	£690.00
Other sums payable	£470.00	£500.00
Total liabilities	£1,320.00	£1,290.00
Net assets	£7,449.02	£5,657.68

Note: No value is put on equipment, score sheets or ties as at 15th April 2005

Trophies:-

Silver Cups: Burn, Capel, Hakansson, Lee-Johnson, 'new' Puller, 'old' Puller, Sharp

Silver Plate Cups: Berry, Davis, EJ Leyns, 2 schools trophies, Glynne Jones, Bunce

Equipment:- GW Davis, JE Gateley, Montague-Jones, Mrs Pattison and KL Woodland boards and sets, 5 engraved clocks, 70 boards, sets and clocks, 18 DGT clocks, 70 ties.

* * * * *

During the season county ties were won by Martin Walker and Ian Mutton (who won the Capel and Burn Cups respectively), Paul Kenning, Steve Weston, Paul Lawrence, Richard House and Mike Price (who all won 3 times in the under 150 team) and Tony Sims, Richard Putman, Keith Woodhouse, Helal Uddin, David Cox and Nick Cornish (who all won 3 times in the under 125 team).

Budget Proposals for 2005/6

General income and expenditure budget for 2005/6

Income	2005 act	2006 est	Expenses	2005 act	2006 est
Adjudications	£37.00	£30.00	Hall hire	£125.00	£125.00
Club affiliation fees	£96.00	£96.00	Insurance	£293.80	£300.00
Interest	£55.20	£55.00	Newsletter/website	£145.51	£150.00
President/VP subs	£266.00	£300.00	SCCU Fees	£50.00	£50.00
Sales	£6.00	£0.00	President/secretary	£0.00	£20.00
Unattached member subs	£30.00	£30.00	Treasurer	£0.00	£15.00
Other	£0.00	£0.00	Adjudications	£15.00	£30.00
			BCF Yearbooks	£32.00	£32.00
			Other	£33.50	£0.00
TOTAL	£490.20	£511.00		£694.81	£722.00

Income and expenditure, specific to activities, budget for 2005-2006

Income		Activity	Expenses	
2005 actual	2006 estimated		2005 actual	2006 est.
£4,422.13	£4,000.00	Hitchin Congress	£3,023.49	£3,500.00
165.70	£150.00	County matches	£238.74	£250.00
£0.00	£0.00	County matches- hall hire	£100.00	£200.00
£86.00	£100.00	Individual tournaments	£203.35	£100.00
£441.14	£450.00	Junior congresses	£0.00	£350.00
£651.53	£550.00	Junior- Megafinal	£317.50	£300.00
£0.00	£0.00	Other junior	£0.00	£0.00
£1,551.33	£1,482	League	£1,400.00	£1,416.80
£146.00	£150.00	Team knock-outs	£44.80	£50.00
£0.00	£0.00	Correspondence chess	£100.00	£100.00
£7,463.83	£6,882.00		£5,427.88	£6,266.80

Budget Summary

General income	£511.00	Activities income	£6,882.00
General expenses	£722.00	Activities expenses	£6,266.80
Deficit on general	£211.00-	Surplus on activities	£615.20
Overall surplus	£404.20		
Of which, congress	£500.00		

Subscriptions and entry fees

1. Vice-presidents (minimum)	£7.50	7. League team fees	
2. Individual members	£6.00	Division 1	£36.00
(correspondence play only)	£5.00	Division 2	£34.00
3. Club affiliation fee	£6.00	Division 3	£32.00
4. Capel/Burn entry fee	£10.00	Division 4	£30.00
5. County match board fee	£3.00	Division 5	£28.00
6. Team KO fees:- Russell	£6.00	Division 6	£26.00
Sharp	£5.00	Division 7	£24.00
U125/U100	£4.00		

League budgeted income & game fee expenses	Teams	Fee	Total	Matches	Games	Game fee
Division 1	7	£36	£252	42	210	£184.80
Division 2	7	£34	£238	42	210	£184.80
Division 3	7	£32	£224	42	210	£184.80
Division 4	7	£30	£210	42	210	£184.80
Division 5	7	£28	£196	42	210	£184.80
Division 6	8	£26	£208	56	280	£246.40
Division 7	8	£24	£192	56	280	£246.40
TOTAL	51		£1,520			£1,416.80
Less 2.5% discount			£1,482			

Hertfordshire Grand Prix 2004-2005) (organiser Steve Law)

Final Results (leading scores)

Name		CBB	H	Brnt	Letc	St A	Leag	Cnty	Pull	TOTAL
Walker, Martin	197	4	3		4		6	1.5	4	114.5
Morris, Simon	136	1	2		1	1	10	3.5	2	110.5
Cox, David	121	2.5			4		11	3	2	105
Venkatramanan, T	199	3.5	4	4		3	6.5			105
Harris, Mark	135		2.5		2	2.5	10	2.5	2	101.5
Cornish, Nick	111		1.5		3.5	2	10	2.5	2.5	98.5
Mutton, Ian	146	3	2		2.5	2	5	1.5	2.5	98.5
Bonafont, Philip	172		2.5	2.5	4	3	6	2	2	95
Dicks, Steve	113	3.5	1.5				6.5	2.5	1.5	94.5
Rixon, Tom	123	2.5	3.5	1.5			7.5			87
Gooding, Ian	167		3				9	1.5	3	84.5
Law, Stephen	166	0	1.5	3	3	2.5	7		3	84
Knott, Simon	217		4				7	3		82
Nunn, Geoffrey	91		3	3	2	3	7.5			80
Ruddick, Gary	100		5			3	5.5	0.5		77.5
Borman, Philip	172	2.5	1				7	1		75
Baker, Peter	87	3	2.5		1.5	3	3			74
Elder, Kidge	85	2.5	1.5		3		6		0	74

CBB = Capel, Burn and Bunce H = Hitchin Congress, Brnt = Barnet Congress Letc = Letchworth (One Day) Congress St A = St Albans Congress Pull = Old Puller Cup

The season saw the inaugural grand prix with £50 prizes in each of four sections; open, under 150, under 125 and under 100. Points scored in events (plus a notional point!) attracted multiples: Capel, Burn and Bunce and Hitchin Congress x6 Old Puller, St Albans, Letchworth and Barnet x2 Hertfordshire League x4 County matches x5.

All the sections were very closely contested especially the Open with Martin Walker's clean sweep in the Old Puller Cup winning him the open section.

Club Knockout Competitions (organiser Lee Harrison)

Russell trophy (open)

1st Round	Semi-Final	Final
Watford 3.5 V Hemel Hempstead 2.5	Watford 2.5 V Hertford 3.5	Hertford 3.5 V
Hoddesdon 3 V Hertford 3*		
Letchworth & Hitchin 3 V St Albans 3*	St Albans 3.5 V Royston 2.5	St Albans 2.5
Little Heath & Brookmans Park 0.5 V Royston 5.5		

Winners: **Hertford**

Sharp Trophy (under 140)

1st Round	Semi-Final	Final
Bishops Stortford 4 V Hemel Hempstead 2	Bishops Stortford 3.5 V St Albans 2.5	Bishops Stortford 3.5
St Albans 4.5 V Watford 1.5		
Hertford 2.5 V Royston 3.5	Royston 3.5 V Stevenage 2.5	Royston 2.5
Little Heath & Brookmans Park 2 V Stevenage 4		

Preliminary Round matches: Hertford 3.5 – 2.5 Barnet Elizabethans, Bishops Stortford 5-1 Hoddesdon, Hemel Hempstead 3.5-2.5 Letchworth & Hitchin

Winners; **Bishop Stortford**

Under 125 Trophy

1st Round	Semi-Final	Final
Rothamsted 1 V Hertford 4	Hertford 2 V	Stevenage 3 V
Stevenage 3.5 V St Albans 1.5	Stevenage 3	
Watford 2 V Letchworth & Hitchin 3	Letchworth & Hitchin 3.5 V	Letchworth & Hitchin 2
Hoddesdon 0 (default) V Barnet Elizabethans 6	Barnet Elizabethans 1.5	

Preliminary Round matches: Rothamsted 4-1 Little Heath & Brookmans Park, Hertford 3-2 Royston, Watford 4-1 Allenburys
Winners: **Stevenage**

Under 100 Trophy

1st Round	Semi-Final	Final
Royston 2 V Hemel Hempstead 2*	Hemel Hempstead 2.5 V	Hemel Hempstead 2
Little Heath & Brookmans Park 1 V Letchworth & Hitchin 3	Letchworth & Hitchin 1.5	
Barnet Elizabethans 2.5 V St Albans 1.5	Barnet Elizabethans 6 V	Barnet Elizabethans 2*
Watford 0 (default) V Hertford 6	Hertford 0 (default)	

Preliminary Round matches: Royston 4-1 Stevenage, Allenburys 1.5-2.5 Hemel Hempstead
Winners: **Barnet Elizabethans**

In all knockout competitions the first named team played at home. * = win on board count.