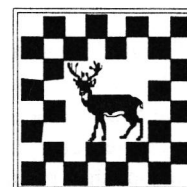


HERTFORDSHIRE CHESS ASSOCIATION NEWSLETTER

No. 35 September 1999

Editor: J Fraser-Mitchell



President	John Denton
Hon. Life Vice Presidents	BA Fewell, AP Primett, FB Roberts, J Sharp
Vice Presidents	A Brewis, PA Bunce, AG Burrows, RR Claret, J Cook, EGD Crowden, W D'Costa, RV Dugdale, R Forst, JN Fraser-Mitchell, MS Harding, TK Hemingway, GT Howard, HR Hurd, BD Judkins, RDJ Kearns, G Kenworthy, QA Latif, NHS Lavers, S Law, JA Leake, C Lean, E Leyns, PG Maguire, CE Majer, PA May, PW Newstead, D Parrott, JD Rhodes, JJA Riley, JC Robertson, JT Simmons, OV Stobart, TM Thurstan, T Tomkins, CA Turner, MM Wali, TC Wright, DP Young

PRESIDENT'S MESSAGE

Although many of us take a summer break from chess, Hertfordshire players have been active on a number of fronts since our Annual General Meeting. Immediately following that meeting, our Championship and Under-125 teams were in action on Counties' Final day at Uppingham. I'll let you find the good news elsewhere in this newsletter of a somewhat overdue Hertfordshire success!

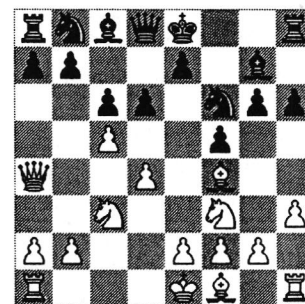
A number of you were involved in helping to run the Chiltern Megafinal of the Saitek Junior Chess Challenge at Letchworth on May 2. Qualifiers from that stage of the competition took part in the national Gigafinal at Nottingham on July 11, and I was delighted to see Lorin D'Costa win the Under-15 section with the fine score of 5.5/6.

Lorin also made his debut in the British Championship at Scarborough in August, together with another of our leading juniors, Costas Harris. Completing the trio of Hertfordshire players was our top board county player, Simon Knott. Lorin was disappointed with his score of 3.5/11, but I am sure he will have many opportunities to better this in the future. Simon scored a very respectable 50%, and proved that he can compete successfully with the top players by drawing with GM's Hebden, Thipsay and Davies, as well as GM-elect Rowson and IM Rahman, who went on to finish joint second. Perhaps the most notable performance of the three, though, came from Costas. After a poor start which could have been very discouraging for a young player, he struck form in the middle of the tournament, finishing with a very respectable 5 points at his first attempt. I particularly liked the following game, which shows Costas' no-nonsense attacking style at its best. His opponent, John Sugden, has been a leading Kent player for many years, and has a reputation as a hard player to beat.

John Denton

Harris,C (2065) - Sugden,J (2241)
British Championship Round 10

1.Nf3 f5 2.d4 Nf6 3.c4 g6 4.Nc3 Bg7 5.Bf4 d6 6.h3 h6 *a little slow, 6...0-0 is better - Ng5 is not a threat yet, and Qd2 (to stop ...h6) is strongly met by ...Ne4* 7.Qa4+ c6 8.c5 (diagram) *The critical point. White's attack has looked fairly innocuous up to this stage but Black soon drifts into trouble* 8...0-0 [8...dxc5 *White now threatens to win a pawn after Bxb8 Rxb8 Qxa7, so accurate calculation is required* A) 9.dxc5 0-0 10.Bxb8 Rxb8 11.Qxa7 Be6 12.Rd1 (12.e3 Bf7 13.Ne5 Qc7 14.Nxf7 Rxf7 15.0-0-0 Ne4) 12...Qc7 *and now eg.* 13.Nd4 Bf7 14.e3 e5 15.Nf3 Nd7 16.Qa3 *the c-pawn was attacked as well as a threat to trap the queen* 16...e4 17.Nd4 f4!?!; B) 9.Bxb8 cxd4 *or even ...Rxb8 as per (A), but the text seems stronger* 10.Nxd4 (10.Be5 dxc3 11.Bxc3 0-0) 10...Rxb8 11.Qxa7 Bd7 12.0-0-0 Qc7] 9.cxd6 exd6 10.e3 Qe7 *Black has to tie himself in knots to defend the d-pawn* 11.Qa3 Ne8 12.0-0-0 Qf6 13.Bd3 Nd7 14.Qb3+ Rf7 15.g4! *a pawn sacrifice to open lines against the Black king* 15...g5 16.Bg3 fxe4 17.Nd2 Nf8 18.Nde4 Qe7 19.h4 d5 20.Nd2 gxe4 21.Bxe4 Qd6 22.Bg3 Qe7 23.Rdg1 b5 24.Bf4 Rxf4 *desperation. White now mops up efficiently* 25.exf4 Qf7 26.Ne2 Ne6 27.f5 Nxd4 28.Nxd4 Bxd4 29.Rxg4+ Bg7 30.Rxh6 Bxf5 31.Bxf5 Qxf5 32.Qh3 Kf7 33.Rhh4 Qe5 34.Qf3+ Kg8 35.Qc3 Qe1+ 36.Kc2 Qxf2 37.Qe5 Qf6 38.Rxg7+ 1-0
(Qxg7 39.Qe6+ Qf7 40. Rh8+ *or* Kxg7 39. Rg4+ Kf7 40. Rf4. *If* 39...Kh7 *in this line,* 40. Qh2+ Qh7 41. Rh4 *wins*)



OFFICERS OF THE ASSOCIATION

President: J Denton, 43 Wordsworth Close, Royston SG8 5TG. Tel: 01763-247758 (h) 01223-861555(w)
Secretary: Dr. J Fraser-Mitchell, 8 Highfield Hall, Highfield Lane, St Albans AL4 0LE. Tel: 01727-848883
Treasurer: C Lean, 47 Benslow Lane, Hitchin SG4 9RE. Tel: 01462-433248
Minutes Secretary: C A Turner, 15 Watling Street, St Albans, AL1 2PY. Tel: 01727-830764
Championship Match Captain: K Clark, 42 Honey Way, Royston SG8 7ES. Tel: 01763-231296
County U150 Team Captain: L Roche, 29b Chiswell Court, Watford WD2 4PJ. Tel: 01923 442094
County U125 Team Captain: Q Latif 13 Daltry Rd, Stevenage. Tel: 01438-352405
County U100 Team Captain: R Gates, 5 Aleyn Way, Baldock, SG7 6SU. Tel: 01462 896121
County U18 Team Captain: W D'Costa, 1 Stakepiece Road, Royston SG8 9DN. Tel: 01763 221121
Correspondence Chess Conductor: G Williams 11 Greenside Drive, Hitchin. Tel: 01462-452849
County Fixtures Secretary: P Gregory, 15 Silverthorne Drive, Hemel Hempstead. Tel: 01442 242420
League Secretary: J A Leake, 57 Crabtree Lane, Harpenden, AL5 5PX. Tel: 01582 760590
Adjudication Secretary: B D Judkins, 2 Constantine Place, Baldock SG7 6ST. Tel: 01462 641768
KO Competitions Controller: G T Howard, 22 Queenswood Drive, Hitchin SG4 0LG. Tel: 01462-452500
Individual Competitions Organiser: P Bunce, 5 The Ridgeway, Hitchin SG5 2BT. Tel: 01462-451055
Magazine Editor: J Fraser-Mitchell (as above)
Congress Organiser: A G Burrows, 85 Pixmore Way, Letchworth SG6 3TP. Tel: 01462 683104 (h) 01462 670010 (w)
Chief Arbiter: T Thurstan, 33 Brampton Park Road, Hitchin. Tel: 01462-459873
County Grader: P Tuck, 3 Colleye Grove, Rothamsted, Harpenden. Tel: 01582 762872
Equipment Curator: R Kearns, 16 The Gardens, Watford. Tel: 01923 225114
Chairman of Youth Group: A G Burrows (as above)
Secondary Schools League: P Glass, 34 Campbell Gordon Way, Parkside, London NW2 6RS. Tel: 0181 4509610
HSCA Liaison Officer: C A Turner (as above)
Hon. Auditor: Tom Tomkins, Ashleigh Lodge, 30 Hart Hill Drive, Luton LU2 0AX

EDITORIAL

Hertford continue to dominate the Herts league, winning Divisions 1, 4 and 6. They also won the Russell Trophy, depriving Hoddesdon of a clean sweep in the knockout competitions. The 'Old' Puller Cup was resurrected as a 4-round quickplay competition for teams of four, with 'beer money' prizes at stake as well as the trophy. 14 teams entered, hopefully next year there will be one from every club.

County teams had a successful year on the whole, with the 1st team notching up an historic win against the County Champions (Kent) and qualifying for the Minor Counties Final again, this time thrashing Norfolk 8-8 in the semis. This time we finally managed to win !!! The 1st team was joined in the finals by the U125 team, but unfortunately there wasn't a double celebration on Saturday, as they lost a very close match. The U150 team needed a win in their last match to qualify for the national stages, but unfortunately had to default 0-16. The U100 team was plagued by poor availability and defaults, otherwise would have done much better. The correspondence team is also doing better than in recent years, with its final score standing of 15.5/26 giving it =4th place in the division. The big disappointment was the Chiltern League team collapsing for the second year running – it seems that nobody wants to captain it.

A new venture this year is the BeNCH U18 league – after a shaky start, availabilities and results improved. This team would seem to be the natural successor to the Chilterns Junior team (which like the adult team, died last year through lack of a captain). A number of junior congresses have been extremely successful, the two primary schools events at St Vincent de Paul (N&E) and Fleetville (C&W) attracting record entries (78 and 141 respectively). The HCA also organised the Saitek Megafinal at Plinston Hall, Letchworth – it was bulging at the seams, with 241 entries ! However a secondary schools congress in St Albans was cancelled, due to only 6 entries. Strange.

Jeremy Fraser-Mitchell

HERTFORDSHIRE CHESS ASSOCIATION

FINANCIAL STATEMENTS

INCOME AND EXPENDITURE ACCOUNT FOR THE YEAR ENDED 15 APRIL 1999

1998	GENERAL INCOME	1999	1998	GENERAL EXPENSES	1999
5	Adjudications	2.00	65	AGM/Committee Hall Hire	100.00
100	Club Affiliation Fees	94.05	28	BCF Year Book	35.00
75	Interest	84.19	227	Bulletin	206.52
493	President & Vice-Presidents Subs	484.00	38	Herts Grading List	45.00
13	Sales - Score Sheet	24.20	167	Insurance	265.02
---	Sales - Ties	6.00	30	SCCU Fees	30.00
70	Unattached Member Subscriptions	60.00	100	Minutes Secretary	82.71
				President	10.00
				Secretary	4.55
				Tie Fund Appropriation	95.00
				Treasurer	20.00
47	Other	15.00	20	Other	95.66
803		769.44	753		989.46

INCOME AND EXPENSES FOR ACTIVITIES WERE

1998		Income	Expenses	Game Fees	Surplus	Deficit
-191	1996 Congress	61.00	---	---	61.00	---
-64	Correspondence Chess	---	36.93	---	---	36.93
-158	County Matches - BCF, SCCU	---	138.00	---	---	138.00
-78	County Matches - General	1108.49	899.19	60.52	148.78	---
-425	County Matches - Hall Hire	---	278.50	---	---	278.50
+37	Individual Tournaments (Capel & Burn)	43.00	13.88	12.11	17.01	---
+38	Junior - Congresses	447.40	324.04	---	123.36	---
+3	Junior - Schools League	78.00	67.00	---	11.00	---
+588	League	1438.61	53.70	816.08	568.83	---
+39	Team Knock-Outs (Russell, Sharp, Under-125)	151.63	8.40	82.66	60.57	---
-211		3328.13	1819.64	971.37	990.55	453.43

GRANT FROM MIDLAND BANK

	Unspent at 16 April 98	Income	Expenses	Unspent at 15 April 99
North Herts League	271.68	---	40.17	231.51

Deduction of unpaid expenses for the 1998-1999 School Year of £57.00 gives a net balance of £174.51

BALANCE SHEET AS AT 15 APRIL 1999

1998	ASSOCIATION FUNDS	1999	1998	ASSETS and LIABILITIES	1999
749	Funds as at 16th April 1998	587.70		Assets	
-----		-----	1295	Bank and Cash Balances	2373.39
			432	Add sums owing to the Assoc	440.00
803	Add General Income	769.44	1727	Total Assets	2813.39
(753)	Less General Expenditure	(989.46)	-----		-----
50	Net General Income/(Expenditure)	(220.02)		Liabilities (* indicates an estimate)	
-----		-----	250	Bulletin (Est)	*260.50
705	Add from Activities in Surplus	990.55	50	County Matches - BCF Final Stages	*50.00
(916)	Less from Activities in Deficit	(453.43)	---	County Matches	210.82
(211)	Net (Deficit)/Surplus on Activities	537.12	---	Junior Congresses	154.83
-----		-----	272	Midland Bank Grant	231.51
(161)	(Deficit)/Surplus for the year	317.10	265	Ties Replacement Fund	360.00
-----		-----	302	Other Sums Payable	84.55
588	General Funds at 15 April 1999	904.80	1139	Total Liabilities	1352.21
---	Congress Funds at 15 April 1999	556.38	-----		-----
388	Total Funds at 15 April 1999	1461.18	588	Net Assets	1461.18

ACCOUNTING POLICY AND EQUIPMENT

NOTE No value is put on Equipment, Score Sheets or Ties as at 15 April 1999

EQUIP) Silver Cups: Burn, Capel, Hakansson, Lee-Johnson, 'new' Puller, 'old' Puller, Sharp.
 -MENT) Silver Plate Cups: Berry, Davis, E J Leyns, 3 Schools League.
 G W Davis Board and Set J E Gately Board and Set Montague-Jones Board and Set
 Mrs Pattison Board and Set K L Woodland Board and Set 5 engraved Chess Clocks,
 70 County Match Boards and Sets, 70 County Match Clocks. 90 Ties (After 5 AGM awards)

(C LEAN)
 Hon Treasurer, 20th May 1999

HERTFORDSHIRE CHESS ASSOCIATION

AUDITOR'S REPORT TO THE MEMBERS OF HERTFORDSHIRE CHESS ASSOCIATION

I have audited the financial statements on the previous page in accordance with approved Auditing Standards.

In common with many other organisations of a similar size and nature, the Association's system of control depends on the close involvement of the Treasurer and other officers. Where independent confirmation of the completeness of the accounting records was not therefore available I have accepted assurances from the Treasurer that all of the Association's transactions have been reflected in the records. The operation of a system of budgetary control has supported my reliance on this assurance. The financial statements have been prepared in accordance with the accounting policies stated.

Subject to the foregoing, in my opinion the financial statements give a true and fair view of the Association's affairs as at 15 April 1999 and of the surplus for the year then ended.

(T TOMKINS, FCCA)
Hon. Auditor, 20th May 1999

Treasurer's commentary on the financial results for the year ended 15 April 1999

After last year's large £161 deficit, I am pleased to report a much better result this year. Results have, in general, been more favourable, giving a final £317 surplus against a £62 budget surplus. Two points, apart from the specific items given below, are of special interest:-

- a) Absence of the two County Chiltern teams, although unfortunate from the Chess playing point of view, resulted in a reduced cost from budget of £75.
- b) The December 1998 Congress made a surplus of £556, due to a generous donation of the Entry Form printing and the Hall Hire costs. Without this it would have made a loss of £50 to £100. This surplus has been put into a special Congress Fund (See the Funds section of the Balance Sheet). This gives a reserve for two purposes: firstly to pay for Entry Form printing and secondly to pay for most of the Hall Hire, both of which need to be paid before much Entry Fee money has been received.

1 GENERAL INCOME

This was £54 over Budget. The main increases were Interest (£24), Vice-Presidents' Subscriptions (£14), and Score Sheet sales (+£14). Remaining items were within £10 of budget.

2 GENERAL EXPENSES

These were £125 over Budget

The main increases were Insurance (£95, due to £102 valuation cost for the more valuable trophies, required by the Insurance Company), Tie Fund Appropriation (£60, due to increasing tie replacement costs by £1 each to allow for five years inflation), and Other (£96, mainly due to £41 expenses towards Glynne Jones' funeral) These were partly offset by decreases in Hall Hire (£30), Bulletin (£43), Secretarial (£12).

Remaining items were within £10 of budget.

3 ACTIVITIES

Game Fee costs were £183 below budget, due to the absence of the 2 County Chiltern teams, a refund for unplayed games by the 1997-98 Chilterns Junior team, and reduced number of League teams.

The 1996 Congress surplus of £61 is a Re-credit for unclaimed expenses, despite reminders.

County Match Hall Hire was £255 below budget because of the absence of the Chiltern Teams and some halls were also below budget. This was partly offset by Board fees less Match Captains' expenses being below budget. The end result was a cost for County teams of £268, being £78 below the budget figure of £346.

Junior Congresses made a £123 surplus instead of the £50 budget deficit. This was due entirely to the very successful Fleetville School (St Albans) Congress last June, which made a £124 surplus.

Remaining items were within £20 of budget.

4 BALANCE SHEET: ASSETS and LIABILITIES as at 15 April 1999

The balances are :- Cash £72.80, Bank of Scotland £489.88, Bank of Scotland Deposit £1750.00, and Midland Bank £60.71.

5 TIES REPLACEMENT FUND

The Association has a tradition of awarding ties under defined rules, and purchases of such ties occur about every fifteen to twenty years. The last purchase was made in 1994. A fund is maintained to provide for their eventual replacement, based on current purchasing cost. Under this formula a sum of £360 would be needed to replenish the stock to 150 ties. As stated above, this includes a £60 cost for increasing the current purchasing cost from the original £5 to £6, to allow for five years' inflation. This sum is therefore provided in the accounts, although there is no contractual liability to replenish the stock.

HERTFORDSHIRE CHESS ASSOCIATION

1999-2000 BUDGET

I give below the Budget estimates and actual results for last season, and the Budget for the coming season. The actual 1998-99 figures differ slightly from the accounts since some adjustments from the previous year and two special items (Insurance valuation & Ties Fund Revaluation) have been excluded to get a more accurate picture.

GENERAL INCOME	1998-99		99-00	GENERAL EXPENSES	1998-99		99-00
	Est.	Actual	Est.		Est.	Actual	Est.
Adjudications	5	2	2	Committee/AGM Halls	130	100	100
Club Affiliation Fees	100	94	88	BCF Year Book	40	35	40
Interest	60	84	60	Bulletin	250	207	250
President & Vice-Pres Subs	470	484	450	Herts Grading Lists	45	45	50
Sales - Score Sheets	10	24	10	Insurance	170	162	170
Sales - Ties	-	6	-	SCCU Fees	30	30	30
Unattached Member Subs	60	60	60	Secretary/Minute Sec.	120	87	100
Other	10	15	10	Ties Fund Appropriation	35	35	36
General Deficit	(145)	(58)	(150)	Treasurer	30	20	24
TOTALS	715	769	680	Other	10	106	30
				TOTALS	860	827	830

ACTIVITIES	1998-99		1999-00	Income	Expenses	Game Fees	Surplus	Deficit
	Est.	Actual	Entry Fees					
Correspondence Chess	-50	-37	-	-	45	-	-	45
County Matches - BCF/SCCU	-146	-138	See notes (1)&(2)	-	160	-	-	160
County Matches - General	+325	+185	See note (2)	480	300	110	70	-
County Matches - Hall Hire	-525	-279	See note (2)	-	325	-	-	325
Individual Tournaments (Capel, Burn)	+33	+17	See note (3)	50	15	14	21	-
Junior - Congresses	-50	+123	See note (4)	450	400	-	50	-
Junior - Schools League	-	+11	-	80	80	-	-	-
League	+575	+569	See note (3)	1395	120	855	420	-
Team KOs (Russell, Sharp, U-125)	+45	+60	See note (3)	145	10	90	45	-
TOTALS	+207	+511		2600	1455	1069	606	530

- NOTES:
- 1) Current indications are for some increase in SCCU items, and BCF Game Fee is increased from 27p to 29p.
 - 2) All County Match expenses assume no Chiltern Teams, and Board Fee unaltered at £3 & Hall Hire at an average of £25
 - 3) Entry fees for these are based on no change from last year.
 - 4) In addition, the North Herts Secondary Schools League costs will come from the Midland Bank Grant.

This gives an overall final Budget deficit of £74. The largest areas of doubt are (as usual) the County teams and the Junior Congresses.

The County Team Board Fee income, Hall Hire, and General Expenses depend greatly on the number of entries from the other counties in the various graded competitions and on the number of home matches. These will not be finalised before the middle of September. Also extra County teams would increase the deficit.

Junior Congresses were successful last year (with the help of Herts County Council Grants towards School Hall Hire), but are subject to wide variations in profitability.

In view of the large surplus last year, I consider that we can stand a small deficit this year.

To summarise the Subscriptions and Entry Fees for the season:-

1) Vice-President Subscription	£7.50 (Minimum)
2) Individual Member Subscription	£6 (£5 for Correspondence Only members)
3) Club Fee	£6
4) League Team Fee	Division 1 £36 Division 2 £34 Division 3 £32 Division 4 £30 Division 5 £28 Division 6 £26 Division 7 £24
5) Team KO Fees	Russell £6 Sharp £5 Under-125 £4
6) Individual KO Fees	£3 (£5 for entry to both events)
7) County Match Board Fee	£3 per player for home matches

The 2.5% discount for payment of items 3), 4), & 5) before 15th November remains.

HERTFORDSHIRE LEAGUE MATCHES

The table shows the final positions, with promoted teams in bold font, and relegated teams in italics. Numbers in brackets are match points and game points respectively.

Div 1	Hertford 1 (17; 36), Barnet 1 (14; 29.5), Hoddesdon 1 (9; 21.5), St Albans 1 (7; 22), Hemel Hempstead 1 (7; 18.5), Watford 1 (6; 21.5), <i>Bumbles Green</i> (withdrawn)
Div 2	Royston 1 (17; 38.5), Letchworth 1 (16; 35.5), Mid Herts 1 (14; 31.5), Hertford 2 (13; 29), St Albans 2 (11; 27.5), St Albans 3 (8; 23.5), <i>Watford 2</i> (5; 22.5)
Div 3	Hoddesdon 2 (14; 27), Stevenage 1 (13; 29), Hemel Hempstead 2 (11; 24.5), Watford 3 (10; 28), Pin Green 1 (9; 24.5), <i>Old Elizabethans</i> (3; 17)
Div 4	Hertford 3 (18; 38), Barnet 2 (15; 30), Letchworth 2 (14; 33.5), St Albans 4 (13; 33.5), St Albans 5 (13; 32), Royston 2 (6; 25.5), <i>Bishops Stortford</i> (5; 16.5)
Div 5	Mid Herts 2 (21; 42), Borehamwood (21; 41.5), Hoddesdon 3 (20; 40), Pin Green 2 (12; 30), Stevenage 2 (11; 34), Hoddesdon 4 (10; 28.5), Watford 4 (9; 30.5), <i>Barnet 3</i> (8; 29.5)
Div 6	Hertford 4 (22; 47), Letchworth 3 (21; 41.5), St Albans 6 (18; 39), Rothamstead (16; 37.5), Hemel Hempstead 3 (13; 34), Barnet 4 (9; 30), Watford 5 (8; 24.5), <i>Mid Herts 3</i> (5; 23.5)
Div 7	Royston 3 (20; 41.5), Hoddesdon 5 (20; 38), St Albans 7 (15; 33.5), Letchworth 4 (12; 30), Stevenage 3 (8; 27), Letchworth 5 (5; 22), Hemel Hempstead 4 (4; 15)

RUSSELL TROPHY

First Round

Bumbles Green	4 - 2	Letchworth
<i>Mid Herts</i>	0 - 6	Barnet

Italic font = team withdrew from competition

Quarter Finals

<i>Bumbles Green</i>	0 - 6	Watford
Royston	2 - 4	Hertford
Barnet	5 - 1	St Albans
Hemel Hempstead	3 - 3*	Hoddesdon

* = win on board count.

Semi Finals

Watford	3 - 3*	Hertford
Barnet	2.5 - 3.5	Hoddesdon

Final

Hertford	3.5 - 2.5	Hoddesdon
----------	-----------	-----------

SHARP TROPHY

First Round

Allenburys	3* - 3	Hertford
Stevenage	4 - 1	Royston
Rothamstead	0 - 6	Borehamwood
Mid Herts	2.5 - 3.5	Hoddesdon

Obviously Stevenage and Royston forgot the match was supposed to be over 6 boards !

Quarter Finals

Hertford	1.5 - 4.5	Letchworth
Watford	4 - 2	Stevenage
Old Elizabethans	2 - 4	Borehamwood
Hemel Hempstead	2 - 4	Hoddesdon

Semi Finals

Letchworth	4.5 - 1.5	Watford
Borehamwood	2 - 4	Hoddesdon

Final

Hoddesdon	5.5 - 0.5	Letchworth
-----------	-----------	------------

U125 KNOCKOUT

First Round

Letchworth	4 - 1	Mid Herts
Hoddesdon	5 - 0	<i>Barnet</i>
Borehamwood	5 - 0	<i>Rothamstead</i>
Hertford	3.5 - 1.5	Hemel Hempstead
<i>Bishops Stortford</i>	0 - 5	Allenburys
<i>St Albans</i>	0 - 5	Watford
Pin Green	3.5 - 1.5	Stevenage

Quarter Finals

Letchworth	1 - 4	Hoddesdon
Borehamwood	2 - 3	Hertford
Allenburys	3 - 2	Watford
Pin Green	2.5 - 2.5*	Royston

Semi Finals

Hoddesdon	3 - 2	Hertford
Allenburys	3.5 - 1.5	Royston

Final

Hoddesdon	3.5 - 1.5	Allenburys
-----------	-----------	------------