

THE HERTFORDSHIRE CHESS ASSOCIATION NEWSLETTER



PRESIDENT:

Bryan A Fewell

HONORARY LIFE VICE PRESIDENTS:

F B Roberts

J Sharp

VICE PRESIDENTS:

A Atkinson

A Brewis

P A Bunce

A G Burrows

N D Camp

R R Claret

J Cook

E G D Crowden

J R Denton

Dr R V Dugdale

R Forst

M S Harding

T K Hemingway

G T Howard

H R Hurd

J G Jones

B D Judkins

R D J Kearns

N H S Lavers

S Law

J A Leake

C Lean

E Leyns

P G Maguire

C E Majer

P A May

P W Newstead

D Parrott

A P Primett

T Ray

J D Rhodes

J J A Riley

J C Robertson

J T Simmons

O V Stobart

P A Thornton

T M Thurstan

T Tomkins

M M Wali

T C Wright

D P Young

EDITORIAL

What happened in the 1995/6 season?

Eric Crowden has 'retired' from running the Correspondence team after 20 seasons, I hope he received his gold watch. Graham Williams has taken over, I guess for a slightly short stint, and I'm sure he would welcome more volunteers to play in the teams.

Paul Byway has won the Capel Cup for the 11th time, increasing his record, the Burn was won by Peter Bunce the organiser(!).

The Capel and Burn had very disappointing low entries again, 8 in the Capel and only 4 in the Burn, this is hardly enough to keep going. The Capel is open to all Herts players and the winner plays top board for the county 1st team. The Burn is restricted to players graded u160.

The Chiltern team won their league for the second year running.

A game in last years St.Albans Challengers reached an endgame of 2R+8P v 2R+8P, after another 20 or so moves the material was a not quite so level, 2R+8P v 2R at which point the game ended!

... and the coming season?

Herts have added two new county teams for the coming seasons competitions. There is now a Junior team in the Chiltern League and an U125 team in the SCCU competition. So we now have

1st (now 16 boards)
Chiltern (20 boards)
U150 (16 boards)
U125 (12 boards)
U100 (12 boards)
Junior team (20 boards)

That makes 96 boards to be filled, if you are interested contact one of the captains (see address list below).

In this issue.

Thanks to Glynne for kindly sending an article explaining how he runs a congress and also some notes on tournament rules. I am sure this will raise some questions, I certainly have some, all questions to Glynne NOT me.

All unattributed articles are down to me, so if there are too many mistakes you can sac me at the next AGM.

No errors found in last years magazine!, but one in the previous years; ... the game on p.21 of the 1994 magazine should have been P.Maullin (w) v K.Ellis (b).

1st Team Match Captain	Joe Franks	90 Park Ave, Ruislip, Middlesex. HA4 7UP.
Chiltern Team Captain	Roger Kearns	16 The Gardens, Watford. WD1 3DS.
U150 Team Match Captain	Mohammed Wali	56 Rowans, Welwyn Garden City.
U125 Team Match Captain	Quazi Latif	13 Daltry Rd, Stevenage.
U100 Team Match Captain	Alan Brewis	5 Cedar Close, Ware. SG12 9PG.
Chiltern (U18) Captain	Bill D'Costa	1 Shakepiece Rd, Royston. SG8 9DN.
Capel and Burn Cup	Peter Bunce	5 The Ridgeway, Hitchin. SG5 2BT.
Correspondence Chess	Graham Williams	11 Greenside Drive, Hitchin.

Cole & Pattison update.

The 1994 magazine carried an article on the late Mrs Pattison's and her father HH.Cole, with a follow up in 1995. In October 95 I received a letter from Stephen Jackson, who was in the process of writing a biography on Sir George Thomas. He had seen the first article and was interested in two games Cole had played against Sir George Thomas in 1933 and 1935. He also filled some details on Cole's career particularly after his return to competitive chess in 1928/9 at Hastings. He also pointed out that Cole

had played a match, in London, against Richard Teichmann in May 1887, the score being 5-0 in Teichmann's favour. Along with his letter was a page from the BCM of 1934, where there was a report that Mrs Pattison's family had been involved in a road accident. It stated that as Miss Hilda Cole she took part in the British Girl's Championship, a quick look though the BCM's of 1929 and 1931 revealed that she had come 2nd and 3rd in the events, it is impossible to tell the standards of the players involved.

Steve Law

PRESIDENT'S REPORT

1995/6 turned out to be another pretty good year for our county teams. The 2nd team retained the Chilterns championship and, at a national level, Herts won through to the semi final of the minor counties championship where they lost to Sussex, the eventual winners. Our U150 team made the national stages as well where they lost narrowly to Lancashire in the quarter finals. Interest in county chess remains high with six Herts teams playing in various competitions in 1996/7, that is apart from those in specific junior events.

Junior activities continue to burgeon, both at secondary and primary school levels which augur well for the future of chess in the county. One of the objectives identified by the Department of National Heritage, who have taken over responsibility for chess at government level, is that formal links should be promoted between schools and clubs. This seems such an eminently sensible (though challenging) suggestion that one wonders why it has not been pursued actively throughout the British Chess Federation in the past. Indeed there has been relatively little action in Herts to date so one hopes that clubs will give serious thought to developing local initiatives to develop chess in schools and to provide a mechanism for local links. Some financial assistance may be considered from Herts funds or from the BCF themselves. Any club wanting help should write to Chris Majer outlining their proposals to promote formal links with local schools.

Our County Secretary has said to me he hopes we won't have to re-paint the Forth bridge again this year by having a rest from competition rule changes. I heartily endorse his view. It would be nice if any disputes were settled amicably rather than directing them to the Rules Committee (or worse towards the European Court!). Then again, knowing chess players, where would we be without a dispute. We can but hope that warfare is concentrated on the chess board itself.

Good luck to all players for 1996/7 and thanks in advance to all our organisers without whose efforts we would not have a healthy and very active Association as a focus for all the chess competition in the county.

5/8/96

Bryan Fewell

OFFICERS OF THE ASSOCIATION 1995/96

President	: B A Fewell	Secretary	: C E Majer
Treasurer	: C Lean	Championship Match Captain	: J Franks
County 2nd (Chiltern) Team Captain	: R Kearns	County 3rd (U150) Team Captain	: M M Wali
County 4th (U125) Team Captain	: Q Latif	County 4th (U100) Team Captain	: A Brewis
County u18 Team Captain	: W D'Costa	County Fixtures Secretary	: J R Denton
League Secretary	: J A Leake	Adjudication Secretary	: B D Judkins
Chief Arbiter & Equipment Curator	: J G Jones	Congress Organiser	: N D Camp
Tournament Secretary (Capel & Burn)	: P Bunce	Club Competitions (Russell & Sharp)	: T M Thurstan
U125 Knock Out Controller	: G T Howard	Correspondence Chess Conductor	: G Williams
Secretary for Junior Chess	: P Glass	Chairman of Youth Group	: A G Burrows
Primary Schools Liaison Officer	: J Pierce	County Grader	: D W Parrott
Auditor	: T Tomkins	Magazine Editor	: S Law

TREASURER'S REPORT

INCOME AND EXPENDITURE ACCOUNT FOR THE YEAR ENDED 15 APRIL 1996

	1995 GENERAL INCOME			1995 GENERAL EXPENSES	
	4 Adjudications	5.00		95 Committee/AGM Hall Hire	104.15
	68 Commission from BCF	8.40		30 BCF Year Book	49.00
	92 Club Affiliation Fees	74.50		182 Bulletin	228.64
	26 Interest	47.40		200 Equipment Replacement	200.00
	386 President & Vice-Presidents subs	394.00		44 Herts Grading List	44.46
	--- Rules Appeals)	21.00		140 Insurance	145.32
	Adjournment Envelopes)			25 SCCU Fees	30.00
	66 Ties - Sales Profit	6.00		79 Secretary	102.05
	11 Ties - Purchase reduction	---		99 Tie Fund Appropriation	61.30
	60 Unattached Member subscriptions	49.00		24 Treasurer	26.00
	70 Other	33.00		10 Other	---
	<u>783</u>	<u>638.30</u>		<u>928</u>	<u>990.92</u>

INCOME AND EXPENSES FOR ACTIVITIES WERE

		Income	Expenses	Game Fees	Surplus	Deficit
+45	Congress	2959.50	2835.02	173.04		48.56
-52	Correspondence Chess		53.00			53.00
-94	County Matches - BCF, SCCU		113.50			113.50
-42	County Matches - General	517.57	428.90	89.01		0.34
-266	County Matches - Hall Hire		109.50			109.50
+12	Individual Tournaments (Capel & Burn)	24.00	8.22	5.32	10.46	
-264	Junior - Congresses	723.12	548.96		174.16	
+11	Junior - Schools League	72.00	77.00			5.00
+777	League	1457.60	64.00	663.40	730.20	
-1	Score Sheets (1995 - Swiss Pairing Cards)	8.80	82.50			73.70
+100	Team Knock-Outs (Russell, Sharp, Under-125)	161.50	12.75	88.45	60.30	
---	Team Tournament (Puller)		5.00			5.00
+226		<u>5924.09</u>	<u>4338.35</u>	<u>1019.22</u>	<u>975.12</u>	<u>408.60</u>

GRANTS FROM OUTSIDE BODIES

	Unspent at 16 April 95	Grants received	Spent in year	Unspent at 15 April 96
BCF/SCCU Junior	160.05	50.00	0.00	210.05
Midland Bank Junior	0.00	500.00	(98.37)	401.63

BALANCE SHEET AS AT 15 APRIL 1996

	1995 ASSOCIATION FUNDS			1995 ASSETS and LIABILITIES	
	459 Funds as at 15th April 1995	539.68		Assets	
	====	-----		1198 Bank and Cash Balances	2031.09
	783 Add General Income	638.30		43 Add sums owing to the Assoc	134.40
	(928) Less General Expenditure	(990.92)		<u>1241</u> Total Assets	<u>2165.49</u>
	(145) Net General Expenditure	(352.62)		====	-----
	====	-----		Liabilities	
	945 Add from Activities in surplus	975.12		180 Bulletin (Est)	225.00
	(719) Less from Activities in Deficit	(408.60)		County Match Hall Hire	120.00
	226 Net surplus from activities	566.52		200 Equipment (Est)	75.70
	====	-----		160 Balance of Grants	611.68
	81 Surplus for the year	213.90		99 Ties Replacement Fund	160.00
	====	-----		62 Other Sums Payable	219.53
	540 Funds as at 15th April 1996	753.58		<u>701</u> Total Liabilities	<u>1411.91</u>
				====	-----
				540 Net Assets	753.58

NOTE No value is put on Equipment, Score Sheets or Ties as at 15 April 1996

EQUIP) Silver Cups: Burn, Capel, Daish, Hakansson, Lee-Johnson, 'new' Puller, 'old' Puller, Sharp.
 -MENT) Silver Plate Cups: Berry, Davis, E J Leyns, 3 Schools League, League Divisions 3, 4, and 5.
 Montague-Jones Board, 5 engraved Chess Clocks, Mrs Pattison Board and Set
 70 County Match Boards and Sets. 70 County Match Clocks. K L Woodland Board and Set
 118 Ties (After 11 awards at the AGM)

(C LEAN)
 Hon Treasurer, 1 June 1996

AUDITOR'S REPORT TO THE MEMBERS OF HERTFORDSHIRE CHESS ASSOCIATION

I have audited the financial statements on the previous page in accordance with approved Auditing Standards.

In common with many other organisations of a similar size and nature, the Association's system of control depends on the close involvement of the Treasurer and other officers. Where independent confirmation of the completeness of the accounting records was not therefore available I have accepted assurances from the Treasurer that all the Association's transactions have been reflected in the records. The operation of a system of budgetary control has supported my reliance on this assurance. The financial statements have been made in accordance with the accounting policies stated.

Subject to the foregoing, in my opinion the financial statements give a true and fair view of the Association's affairs at 15 April 1996 and of the surplus for the year then ended.

(T TOMKINS, FCCA)
Hon. Auditor, 1 June 1996

Notes to the Income and Expenditure Account for the year ended 15 April 1996

This is the second year since the change to collect most of our Income from events instead of from registered members, and also to pay the BCF on games played instead of a total global amount. It is now again possible to give comparisons with the previous year.

1 GENERAL INCOME

Although £145 less than last year, this was £49 over Budget, with £34 coming from increased Vice-Presidents' Subscriptions.

2 GENERAL EXPENSES

This was over £60 up on last year, and was £100 over Budget.

Individual items were mainly close to Budget, but secretarial expenses were £26 over budget, our County Teams' successes meant an excess of £37 for Ties and loss of subsidised printing of the Bulletin means an estimated £45 over budget

3 ACTIVITIES

Several activities came out considerably different from Budget:-

The annual Congress made a £49 deficit against a £50 budget surplus - due to reduced entries and a returned £57 cheque. The Controller's expenses included £75.00 for petrol, and £69 for two nights accommodation. Other congress expenses consisted of £1921 prizes, £500 hall hire, and £198 postage and stationery.

County match total expenses were under budget by £87: hall hire costs were reduced by playing two or three matches on the same day at the (FREE) General Accident venue, Game Fee costs were reduced due to a refund for an unplayed match last year, and match captains' expenses were less than expected (My thanks to all of them).

The Primary School initiative did not need any of the £150 budgeted subsidy, and actually made a £174 surplus. (However the development cost over two years has been £90.)

There was no surplus from Swiss Pairing Cards since the supply has been exhausted and, in addition, there has been a cost to buy 7500 score sheets, which the treasurer holds for sale at cost to Clubs/Congresses.

The overall result of these and the other small variations was a surplus of £210 in excess of the budgeted amount of £357!

4 GRANTS FROM OUTSIDE BODIES

These are the BCF/SCCU JUNIOR grants to develop Junior Chess in Hertfordshire and the MIDLAND BANK grant to develop Secondary School Chess in North Hertfordshire.

The BCF/SCCU Junior grant benefitted from the £50 SCCU grant, but was not drawn on this year.

The Midland Bank made a £500 grant to help Secondary School Chess development in North Herts over the next three years; £98.37 was used and the remainder transferred to the Balance Sheet as a future liability.

5 BALANCE SHEET: ASSETS and LIABILITIES

The Balances are:- Cash £25.70, Bank of Scotland £1506.44 and Midland Bank £498.95.

Sums owing to the Association are:- £55.40 for early payment of Junior 1996/97 expenses and County Match Captains £79 surplus from Board fees less Expenses.

Other sums payable are for Secretary £30, County Match general expenses £70.50, Team KOs £8, and Junior Congresses £111.03

6 TIES REPLACEMENT FUND

The Association has a tradition of awarding ties under defined rules and purchases of such ties occur about every twenty years, the last purchase being in 1994. A fund is maintained to provide for their eventual replacement, based on current purchasing cost. Under this formula a sum of £160 would be needed to replenish the stock of ties to 150. This sum is therefore provided in the accounts, although there is no contractual liability to replenish the stock.

LEAGUE SECRETARY'S REPORT

This was my 'Anus Horribilis', Windsor Castle didn't burn, England didn't win the European Cup, but worse still my computer failed at a crucial time and caused me hell. The lesson well learned - back up files even if they are over 5Mbytes in size.

I was able to reconstruct most of the data and I am grateful to all of the club officers who were able to provide essential information. However, due to games listed as 'A', the final situation in three divisions was still unclear well into June.

Hilltop succumbed to relegation when their last game was adjudicated a draw, they needed a win to force a play-off with Pin Green. In division 2, the promotion ambitions of Barnet and Royston were hotly contested right to the end. Relegation in division 3 was a fear shared by St.Albans 3 and Stevenage 1, both had 2 games outstanding and stood 2-1 in games down. Stevenage 1 'earned' relegation to division 4 but, since Stevenage 2 are on their way up to division 3, I don't really think the club much minds. Particularly gratifying was the very small number of ineligible players in this season's matches.

To my knowledge two teams will not enter the league next season. Allenbury's will concentrate their efforts in the Hertford & District League and Bishops Stortford intend to trim their presence down to one team. A restructuring of the league will have to take place, with the possibility of returning to 7 divisions.

Report by John Leake.

Division 1	P	W	D	L	Dd	Es	Hi	Ai	Pts	+	-
Hertford 1	12	10	0	2					20	42	18
St.Albans 1	12	8	1	3					17	33	27
Hoddesdon 1	12	5	2	5					12	29½	30½
Watford 1	12	5	2	5					12	28½	31½
H Hempstead 1	12	3	3	6					9	26½	33½
Pin Green 1	12	3	1	8					7	25½	34½
Hilltop	12	3	1	8					7	25	35

Division 5	P	W	D	L	Dd	Es	Hi	Ai	Pts	+	-
Hertford 3	12	8	3	1					19	36	24
H Hempstead 2	12	8	2	2					18	39	21
Watford 3	12	6	3	3					15	35	25
Barnet 2	12	6	2	4					14	32½	27½
Hoddesdon 3	12	3	3	6					9	26½	33½
B Stortford 2	12	2	2	8					6	22½	37½
Letchworth 3	12	0	3	9					3	18½	41½

Division 2	P	W	D	L	Dd	Es	Hi	Ai	Pts	+	-
Royston 1	12	9	3	0					21	41½	18½
Barnet 1	12	9	2	1		1			20	40½	18½
Hertford 2	12	4	4	4					12	33½	26½
Watford 2	12	4	2	6					10	27	33
WGC 1	12	3	3	6		1			9	22	37
St.Albans 2	12	2	3	7					7	22½	37½
B Stortford 1	12	2	1	9					5	22	38

Division 6	P	W	D	L	Dd	Es	Hi	Ai	Pts	+	-
Barnet 3	12	10	1	1					21	43	17
Royston 2	12	9	0	3					18	41	18
Hoddesdon 4	12	5	2	5					12	29	31
Pin Green 2	12	5	1	6					11	26½	33½
Rothamsted	12	2	5	5					9	27½	32½
Stevenage 3	12	3	1	8				1	7	20	39
WGC 2	12	2	2	8					6	22	38

Division 3	P	W	D	L	Dd	Es	Hi	Ai	Pts	+	-
Letchworth 1	12	9	2	1					20	39½	20½
Bumbles Green	12	8	1	3					17	37½	22½
Old Eliz's	12	6	1	5					13	30½	29½
Letchworth 2	12	5	1	6					11	28½	31½
Chess Forum	12	4	2	6					10	26	34
St.Albans 3	12	3	1	8					7	22	38
Stevenage 1	12	3	0	9					6	26	34

Division 7	P	W	D	L	Dd	Es	Hi	Ai	Pts	+	-
Watford 4	12	9	1	2					19	37	22
Hertford 4	12	8	2	2					18	36	24
Watford 5	12	7	1	4					15	33½	26½
H Hempstead 3	12	6	0	6					12	32½	27½
Letchworth 4	12	5	0	7				1	10	31	28
Barnet 4	12	4	1	7					9	26½	33½
Hoddesdon 5	12	0	1	11					1	12½	47½

Division 4	P	W	D	L	Dd	Es	Hi	Ai	Pts	+	-
Stevenage 2	12	9	1	2					19	35½	24½
Hoddesdon 2	12	8	2	2					18	39½	20½
St.Albans 5	12	8	0	4					16	33½	26½
St.Albans 4	12	6	1	5					13	31	29
Borehamwood	12	4	0	8					8	25½	34½
Allenbury's	12	2	2	8					6	24	36
St.Albans 6	12	1	2	9					4	21	39

Division 8	P	W	D	L	Dd	Es	Hi	Ai	Pts	+	-
WGC 3	10	7	1	2					15	32½	17½
St.Albans 7	10	6	2	2		2			14	32½	15½
Letchworth 5	10	6	1	3					13	30½	19½
H Hempstead 4	10	4	2	4					10	25	25
Letchworth 6	10	3	0	7			1		6	16½	31½
Royston 3	10	1	0	9			1		2	10	38

P = Matches played (includes Dd)
W = Wins
D = Draws
L = Losses

Dd = Matches double defaulted
Es = Games doubled defaulted
Hi = Home player ineligible
Ai = Away player ineligible

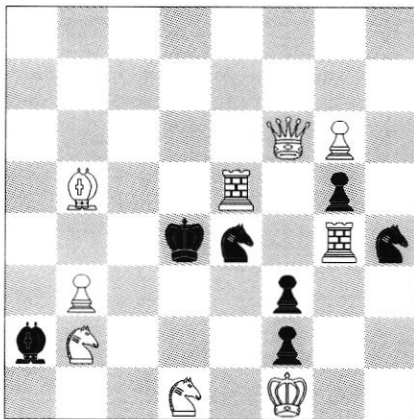
British Problem Solving Championship 1995-96

This years problem solving championship saw Herts again represented by Joe Franks and Steve Law, among the 22 finalists and 3 casual solvers, at Oakham School in Rutland on the 17th February. After the first round, consisting of 3 mate in 2's, we both had 6/6 but after that the slump set in, Joe ended with 12/30 and I scored 10/30. For the record the winner was for the first time Michael McDowell, who made a short speech, when he thanked the organisers of the 4NCL for holding a round on the same day and thus reducing the field of some of the other favourites.

The top placings were:-

Michael McDowell	26/30
Ian Watson	21½/30
Roddy McKay	21/30
Stephen Orton	20½/30

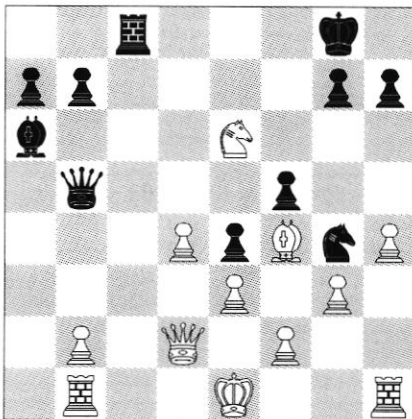
The following selfmate in 4 proved the most difficult with only Colin Vaughan picking up a score of 1/4 all the others in the main event scored 0/4, although Graham Lee, in the casual solvers scored 4/4.



White to play and force black to mate white in 4 moves. It is worth noting that selfmates are made 'easier' due to the small number of moves normally available to black, 4 in this case.

Black to play and win

The following position was based on a game Lumsden-Law, when the winning plan went horrible wrong! But I still liked the idea, so its black to play and win.

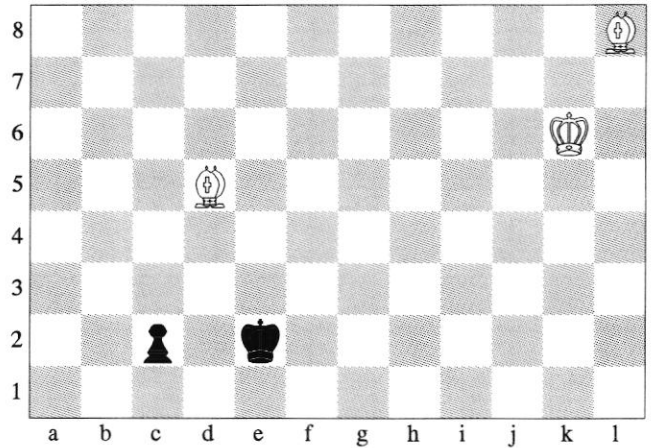


Modern Courier Chess
(Hors concours - Paul Byway)

This Modern Courier Chess endgame study was composed for the 1995 Jan van Reek 50th Anniversary Jubilee Tourney. The medieval Courier game was well liked before the great popularity of chess started. It is pictured on a painting by Lucas van Leyden, incorrectly known as *The Chess Game*. Queens and Bishops with contemporary rules have entered the modern version of the Courier Game.

To save you looking up 'Hors concours' I did it for you and it means 'not competing for prize', and pronounced 'orr kawnoor' but I assume you knew that.

Your task is white to play and draw.



Anti Andernach Chess

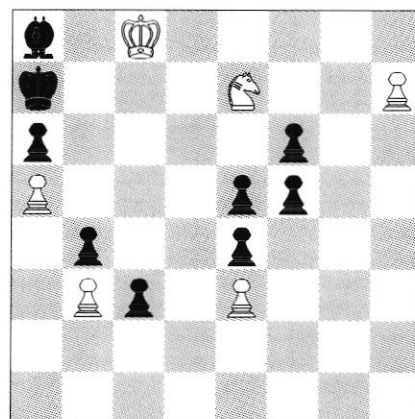
I was recently introduced to a new form of chess problem called 'Anti Andernach Chess'. In this form any piece not capturing changes colour with the exception of the Kings. This has the effect of limiting the attacking sides choice of move down to 4 types.

- (1) Captures
- (2) King moves
- (3) Pawn promotions
- (4) Pawn 2 squares.

All other moves can reversed by the defender! Note that O-O-O and O-O are illegal as the king castles into check, also en-passant is also impossible as you can't capture your own pawn!

One obvious question, why 'Anti Andernach', well it made its appearance at the annual problem solving meeting in Andernach, Germany. So why 'Anti', well of course 'Andernach' chess appeared at a previous meeting, and in 'Andernach' chess all pieces change colour when capturing, except kings.

Well try this rather simple problem to start with, white to play and win.



CLUB KNOCKOUT TOURNAMENTS

Russell Trophy

1st Round		2nd Round		Quarter-final		Semi-final		Final	
Watford Old Elizabethans	w/d	Watford Stevenage	4 2	Watford bye		Watford Hilltop	3½ 2½	Watford	3½ ?
Chess Forum Stevenage	1 5							Hertford	2½ ?
Hilltop Borehamwood	w/d	Hilltop Letchworth	3½ 2½	Hilltop bye				Winners - WATFORD	
Letchworth Allenbury's	5 1								
Royston Hoddesdon	2 4	Hoddesdon bye				Hoddesdon Barnet	3 3		
St. Albans WGC	w/d								
Barnet Bishops Stortford	3½ 2½	St. Albans Barnet	1 5					Barnet Hertford	½ 5½
Pin Green Bumbles Green	4 2								
Hemel Hempstead Hertford	1½ 4½	Pin Green Hertford	2½ 3½	Hertford bye					

Watford won again, the 4th time in the last 6 seasons. (Oddly, following 3 consecutive wins by Barnet) Their win against Hertford was surprising considering the thrashing the losers handed out to Barnet in the Semi-final. Note:- As Old Elizabethans have defaulted in the last 3 years and WGC in the last 2, I propose leaving both clubs out of the draw for the 1996/7 event.

Report by Tim Thurstan.

Under 125 team knockout

1st Round		Quarter-final		Semi-final		Final	
Pin Green Royston	w/d	Royston bye		Royston Stevenage	3 2	Royston Barnet	1½ 3½
WGC Bishops Stortford	w/d w/d						
St. Albans Hoddesdon	2½ 2½	Hoddesdon Stevenage	2½ 2½				
Stevenage Borehamwood	3 2						
Hertford Hemel Hempstead	w/d	Hertford Letchworth	3 2				
Letchworth Chess Forum	w/d						
Barnet Rothamsted	4 1			Hertford Barnet	1½ 3½		
Allenbury's Watford	3½ 1½	Barnet Allenbury's	4 1				

Winners - BARNET

After a very slow start, especially for Royston, Barnet forged into the final which they won convincingly.

Report by Graham Howard.

1st Round

Sharp Trophy

Hertford	3
Watford	3

2nd Round

Quarter-final

Hertford	3	Hertford	
Stevenage	3	bye	

Stevenage	4½
Hemel Hempstead	1½

Semi-final

Hertford	4
Hoddesdon	2

WGC	2
Royston	4

Royston	
bye	

Hoddesdon	3
St.Albans	3

Royston	1½
Hoddesdon	4½

Bumbles Green	w/d
Bishops Stortford	

Hoddesdon	w/d
Bishops Stortford	w/d

Final

Hertford	3
Old Elizabethans	3

Barnet	
Borehamwood	w/d

Barnet	3½	Barnet	
Allenburys	2½	bye	

Allenburys	
Chess Forum	w/d

Barnet	3
Old Elizabethans	3

Letchworth	4
Rothamsted	2

Letchworth	1½	Old Elizabethans	
Old Elizabethans	4½	bye	

Hilltop	w/d
Old Elizabethans	

Unlike the Russell, the Sharp has been won by 8 different clubs in the last 9 years, although Hertfords win was their second in 3 years. Note:- I propose not to include Chess Forum (defaulted in the last 3 years), Bishops Stortford (last 2 years) and Pin Green (only participated once in the last 3 years) in the competition for 1996/7. Finally next season will be my 10th year in charge - it is time for a change - I am of course prepared to help the HCA in some other capacity if needed.

Report by Tim Thurstan.

TOURNAMENT SECRETARY'S REPORT

Capel Cup

Quarter-final

Chris Majer	0d
Paul Byway	1d

Semi-final

Paul Byway	1½
Phil Maguire	½

Phil Maguire	1
Steve Law	0

Final

Paul Byway	1
Alastair Simpson	0

Jeremy Fraser-Mitchell	0
Alastair Simpson	1

Alastair Simpson	1
Ian Hall	0

Winner - **Paul Byway**

Tom Wright	2
Ian Hall	2

d=default

The quarter-final between Tom Wright and Ian Hall was decided by the toss of a coin, after the players had played out four draws.

Burn Cup

There were only four entries for the Burn Cup and so an all-play-all competition was held. The results were:

1st	Peter Bunce	2
2nd=	Ian Hall	1½
	Tom Wright	1½
4th	Arthur Potter	1

Winner - **Peter Bunce**

Report by Peter Bunce.

GRADING REPORT

For the first time in a number of years, the end of season grading round up went perfectly smoothly; no last minute results from club secretaries etc (THANK YOU) and no hiccups at the BCF.

The figures this year seem to continue to be a little contradictory. The small decline in the number of clubs contesting the league, both last season and the season to come, is reflected in a reduction of both the total number of players and more worryingly, a sharp decline in the number of new players. As a result however, of more clubs sending in more internal results, the number of games played was up. During 1995/96 a total of 392 players (compared with 419 last year and the record of 430), including only 42 new players (88 and 122 respectively) played a total of 2505 games (ie 5010 individual results). This is 78 up on last years record figure.

As always Hoddesdon had the most results with 814 (down on last years 958), with Watford second with a massive increase to 629 and Letchworth third with 494. The largest number of players came from St Albans with 42 (45 last year) Hoddesdon had 40 (46) and Letchworth 38 (36). The largest number of new players was from Letchworth with 9 and sadly, no other club having more than 5.

Once again the most number of games came from Roger Kearns with 81 - greatly up on last years 59; this also does not take into account Rogers County and Congress games, although it does include games for his third club Borehamwood. The result was a massive 10134 grading points - the first time anyone has reached 5 figures in my 11 years as County grader. Second and third in the "endurance stakes" (although also rans compared with Roger) were Russell Moye with 5825 from 49 games and Ron Hughes with 5278 from 35 games; both needless to say from Hoddesdon.

Despite the loss to the County over the last couple of seasons of such strong players as Messrs Coleman, Moore, Murphy, Knott, Madueke and Ellames the top 10 still shows 5 players coming out at 200 plus for 95/96. New entries to the list are Ross Brennan (who seems to appear in every list this season), Dave Fewell and Ben Savage (who savaged me in our league game). Full list is :

1 Steve Swanson	219 from 13 games	6 Phil Maguire	199 from 15 games
2 Simon Knott	208 from 10 games	7 Ben Savage	196 from 9 games
3 Gary Kenworthy	206 from 11 games	8 Jerry Rudge	193 from 22 games
4 Paul Georghiou	204 from 14 games	9 Paul Byway	190 from 10 games
5 Ross Brennan	200 from 9 games	10 Dave Fewell	189 from 17 games

The total number of players unbeaten over of a minimum of 8 league games shows, like the top 10, four Hertford players - not surprising after the clubs success last season. It was encouraging to see several under 20's in this list, they are:

1 Steve Swanson	10.5 / 11	5 Remi Strouss	8 / 9
2 James Angus	10 / 12	7 Ross Brennan	7.5 / 9
3 Gary Kenworthy	9 / 10	8 Paul Byway	6.5 / 8
4 Paul Georghiou	9 / 11	9 Simon Gardner	6 / 8
5 Robert Long	8 / 9	9 Steve Tobey	6 / 8

A new feature included in this report is a list of 10 players whose games graded by myself showed the greatest improvement on their 1995 grades. As maybe expected this list shows a good percentage of Juniors, with young Lorin D'Costa showing an increase of 46 points, they are:

1 Lorin D'Costa	124 from 78	6 Geoff Bounds	114 from 82
2 David Waltham	127 from 85	8 Anthony Burrows	172 from 143
3 Lawson Noble	131 from 92	9 Martin Jones	145 from 117
4 James Angus	139 from 104	10 Paul Littlefair	159 from 133
5 Ross Brennan	200 from 166	10 Remi Strouss	105 from 79
6 Keith Woodhouse	122 from 90	10 John Nolan	148 from 122

As the season developed I became increasingly aware of a distinct shift in the relative strength of the 8 divisions, so I repeated the exercise I have done previously, ie determining the average mean grades of players per board per division. As I had anticipated a couple of shifts were very noticeable; division 5 was actually stronger than division 4 on all 5 boards, and the large gap between divisions 2 & 3 had closed considerably. The findings are:

	BRD1			BRD2			BRD3			BRD4			BRD5		
	88	94	96	88	94	96	88	94	96	88	94	96	88	94	96
DIV 1	191	204	189	171	188	176	176	168	158	155	170	156	152	151	148
DIV 2	168	189	179	154	175	166	133	157	158	135	162	146	131	144	129
DIV 3	145	164	169	137	143	148	127	139	139	125	134	138	119	119	127
DIV 4	126	149	130	125	133	126	113	130	120	110	119	117	103	117	111
DIV 5	121	126	137	115	122	131	114	121	121	109	112	118	105	107	112
DIV 6	120	135	120	113	118	117	105	110	108	100	109	99	92	93	84
DIV 7	112	111	104	90	107	99	90	93	91	86	95	84	85	77	80
DIV 8		85			80			79			75				73

I would be pleased to hear from anyone who wants to pass on alterations or amendments to the grading list, and also anyone wishing to send me results for grading.

As always all facts and figures in this report refer purely to games graded by myself, ie not including county, congress games etc, and peoples 1996 grades could well differ from those shown.

DAVE PARROTT